



**Product Specifications for L63B752BBK**

Measurement System: Metric	Revision: 4	<b>Technical Specifications</b>			
Refrigerant: R404A	Series Family: B	Voltage	Phase	Frequency	Evaporator Temperature Range
		220/240	1	50	-40°C to -10°C

Performance	1	2	3
	ARI	ARI	ASRET
	(220v)	(240v)	(220v)
Capacity (Watts)	1 200	1 200	1 700
Motor Input (Watt)	1 200	1 260	1 160
Current (Amp)	6.6	7.1	6.4
COP	1.0	1.0	1.5
Efficiency (%)	46.2		
Evaporating Temp.°C	-23.3	-23.3	-23.3
Condensing Temp.°C	48.9	48.9	54.4
Ambient Temp.°C	35	35	32.2
Liquid Temp.°C	48.9	48.9	32.2
Return Gas Temp.°C	4.4	4.4	32.2

Nominal Performance Data @ 50 Hz (±5) based upon 72hr run-in

**Mechanical Data**

Bore X Stroke	3.810 X 1.996 cm	Speed	2900 rpm
Displacement	7.9 m <sup>3</sup> /hr	IPRV Setting	31 - 38 ΔP(bar)
Displacement	45.5 cc/rev	Refrigerant Charge Limit	3 kg

**Electrical Data**

RLA: 7.5	LRA: 49	MCC: 15.4
Voltage Range: 198 - 264	Protection Type: Internal Line Break	
U.L. File: N/A	CE Approval: Yes	CCC Approval: No
Motor Res. in Ohms (Ω) ± 5%		
T1-T3 (C-R)	T1-T2 (C-S)	T2-T3 (S-R)
1.180	5.050	6.230

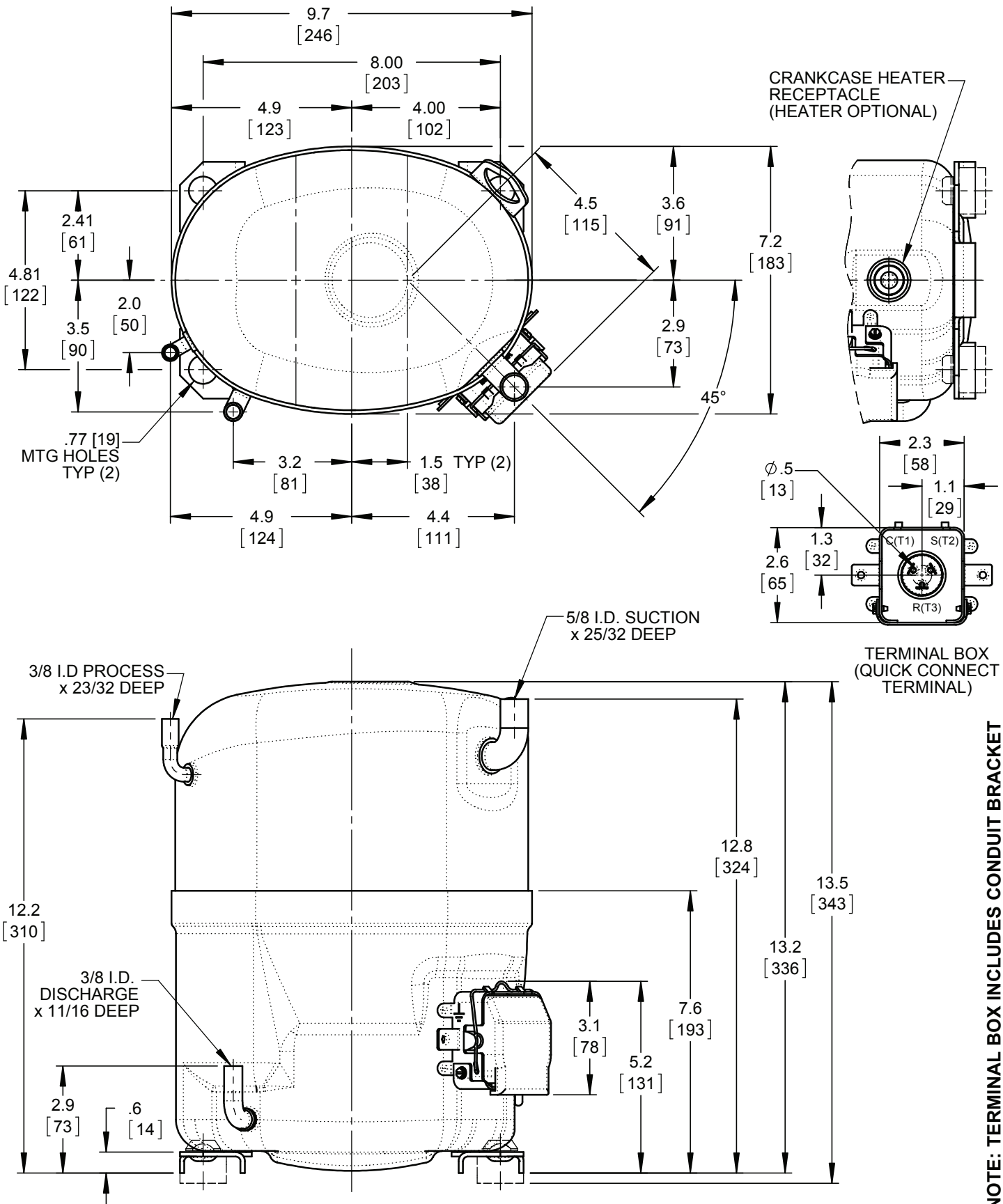
**Electrical Accessories**

Start Relay: GE 3ARR3*10AU* ( )	
Start Cap: 125-149/250 μF/volts	
Run Cap: 15/370 μF/volts	(Parenthesis Denote Med.Torque Components)
PTCR Start Device: Ceramite P/N: N/A	PTCR Start Device: AC Ohms: N/A
Crankcase Heater Vendor P/N: Sensata 8HT5	
Type-Watts: PCTR - 30	

**Other Technical Info**

Oil Name: Polyolester 22A	Oil Charge	Internal Free Volume	5 817 cc
Oil Spec: 581829	Initial Charge: 1183 cc	Recharge: 1094 cc	Max. Compressor Height
Viscosity: 23.1 cSt @ 40°C			33.655 cm
		Weight Net	27.7 kg
		Weight Shipped	29.3 kg

L63B752BBK Copyright © 2016Bristol Compressors International, Inc. All rights reserved.



MODEL: **L63B752BBKB**

VOLTAGE: **220/240** PH: **1** Hz: **50** LRA: **49**

E/N RELEASE: **N04503**

REVISIONS

B	X19802	CS
---	--------	----

**TOLERANCES UNLESS SPECIFIED**

ONE PLACE DECIMAL:  $\pm .125$  (3.158mm)  
 TWO PLACE DECIMAL:  $\pm .06$  (1.5mm)  
 ANGULAR:  $\pm 5^\circ$

MARKETING REQ:

CHKD: CS 1-6-14

DRWN: LBW 8-5-13



B/M NO:

**704315**